

Draught (Sternpost height)	.762m(2'6")
Air Draught (<i>Ha</i>)	3m (10') 2m (6'9") - wheel house demounted

Engine(s)

Engine Vetus-Deutz 6 cylinder 170 hp Raw water cooled with seacocks to both sides. Suitable for all European rivers. Wet exhaust with alarm monitor.

Generator Vetus-Mitsubishi 6.5 KVA cocooned. Raw water cooled.

The engine room is accessed from a passage within the vessel allowing entry at engine room level and has standing head room making for easy maintenance. This passage also gives access to the aft cabin. This arrangement means there is no need for lifting the wheelhouse floor and the use of impracticable steps down. It also means no extra door in the wheelhouse down to the aft cabin.

Batteries :- All new from March 2015

12x 2 volt 735 amp hours domestic traction batteries 24-volt supply.

2 x 12 volt 130 amps engine start

1 x 12 volt 110 amps generator start

Construction

The base plate is 8 ft with chines.

Base plate 12.5mm

Hull sides 6mm

Cabin sides 5mm

Roof 5mm

The whole vessel was shot blasted before painting. This removes the mill scale thus giving a uniform and clean surface to paint. The whole of the vessel was then painted in Interzone 954, a high performance two-pack epoxy blacking system. The top superstructure was then painted with International Perfection a two-pack polyurethane paint. All of this procedure results in a high gloss hard wearing finish.

Hull repainted in March 2015 with in Interzone 954.

The insulation is 50mm spray foam and the floor is lined with 7mm foil insulation wrap.

The front deck has a large gas locker with space for 2 x 13kgs and access to the bow locker and bow thruster locker with anchor locker with 150 mts 10mm chain and 50 kg anchor.

The Vetus hydraulic anchor 50kg winch is up front chain stored in the bow locker.

Accommodation

The main cabin is timber floor with carpet in both bedrooms. The central skylight can be removed after unlocking to gain access for larger pieces of furniture. There is also a cover for outside. All portholes have both curtains and matching porthole bungs Perspex in rear cabin. These help to retain heat in the winter. There are many cupboards throughout. The loose fitting furniture is included in the sale.

The galley is fitted with a New World four burner gas hob and a Bosch oven (new 2015). There is a freezer and fridge (new 2015). The floor is wood.

The front sleeping cabin has a double bed which you can walk around. There is a full width hanging wardrobe as well as other cupboards.

The aft cabin was originally the main cabin and has double bed with storage underneath plus weed hatch for easy access to propeller. There is a toilet compartment with Jabsco macerator toilet and hand basin.

Washing machine is situated in the passage.

The inverter charger are also in the passage.

Wheelhouse:-

This is accessed from both port and starboard and has a lockable door and hatch down steps to the inside. There is bench seating with storage under and also a blower radiator for effective heating while cruising. All windows have blinds/curtains fitted.

The wheelhouse folds down giving an air draft of 2mts.

Equipment included in sale

Full instruments including Garmin Sat Nav, two VHF radios and air horn.

Blueboard.

A satellite dish is sighted on the main cabin roof.

Gas Locker:- This is situated at the bow at deck level and has space for 2 x 13kg bottles. Connectors at present are set for the French system with easy change over to UK system.

Inflatable rubber dinghy powered by a Honda 4 stroke engine.

Safety Equipment

Within the vessel there are one smoke detectors, and carbon monoxide detectors and a gas detector. There are 7 fire extinguishers. Bilge pumps to all required areas 2 are auto armed.

All cutlery dishes glasses and cups.

All maps and navigation books on board

All furniture as seen including leather lounge

All Pots pans

Oven, Gas HOB and microwave.

Large screen, wall mounted, Samsung TV with satellite receiver and dish

All spare parts including new Jabsco pumps - 1 for water supply - 1 for black water disposal

Engine and generator filters and parts on board.

All fenders, ropes, chains stakes.



Wheel house: <https://www.dropbox.com/preview/Wheel%20house.mp4>



Passage to rear. Freezer and washing machine to right and engine room entry to left. Straight ahead to rear bedroom.



Original Wheel house instrument panel.



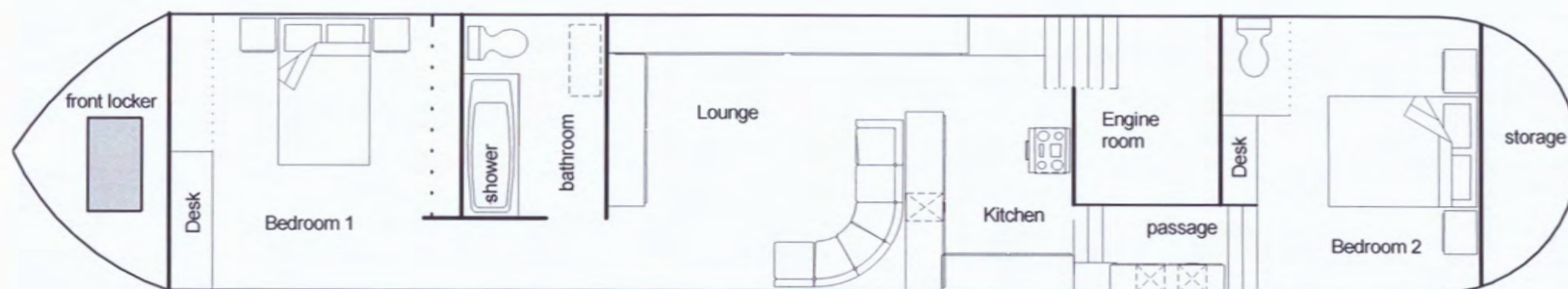
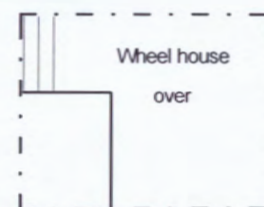
View to rear. Tender is included in sales price.



Genset enclosed in insulated box.



Kitchen upgrade new fridge and electric oven.



Barge Kendra Erin

not to scale

Kevin Bond
+33 (0) 767455353 french mbl